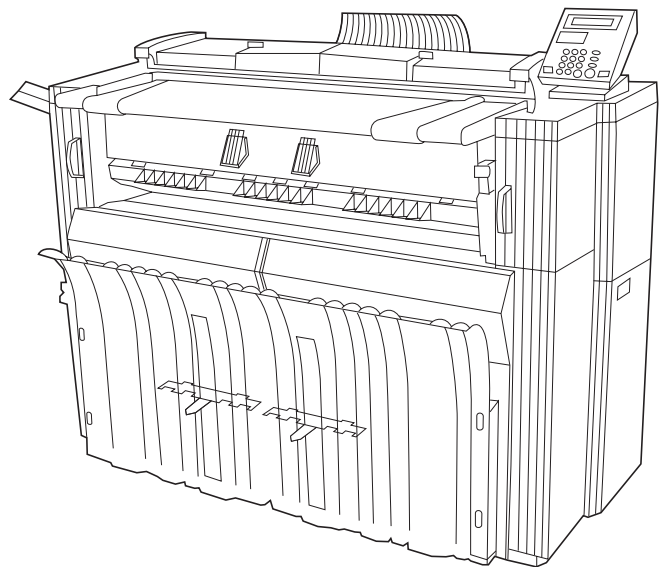
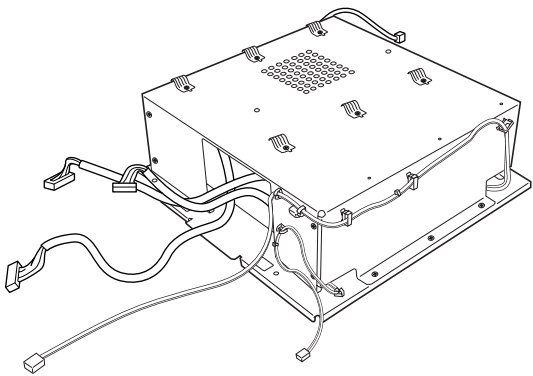
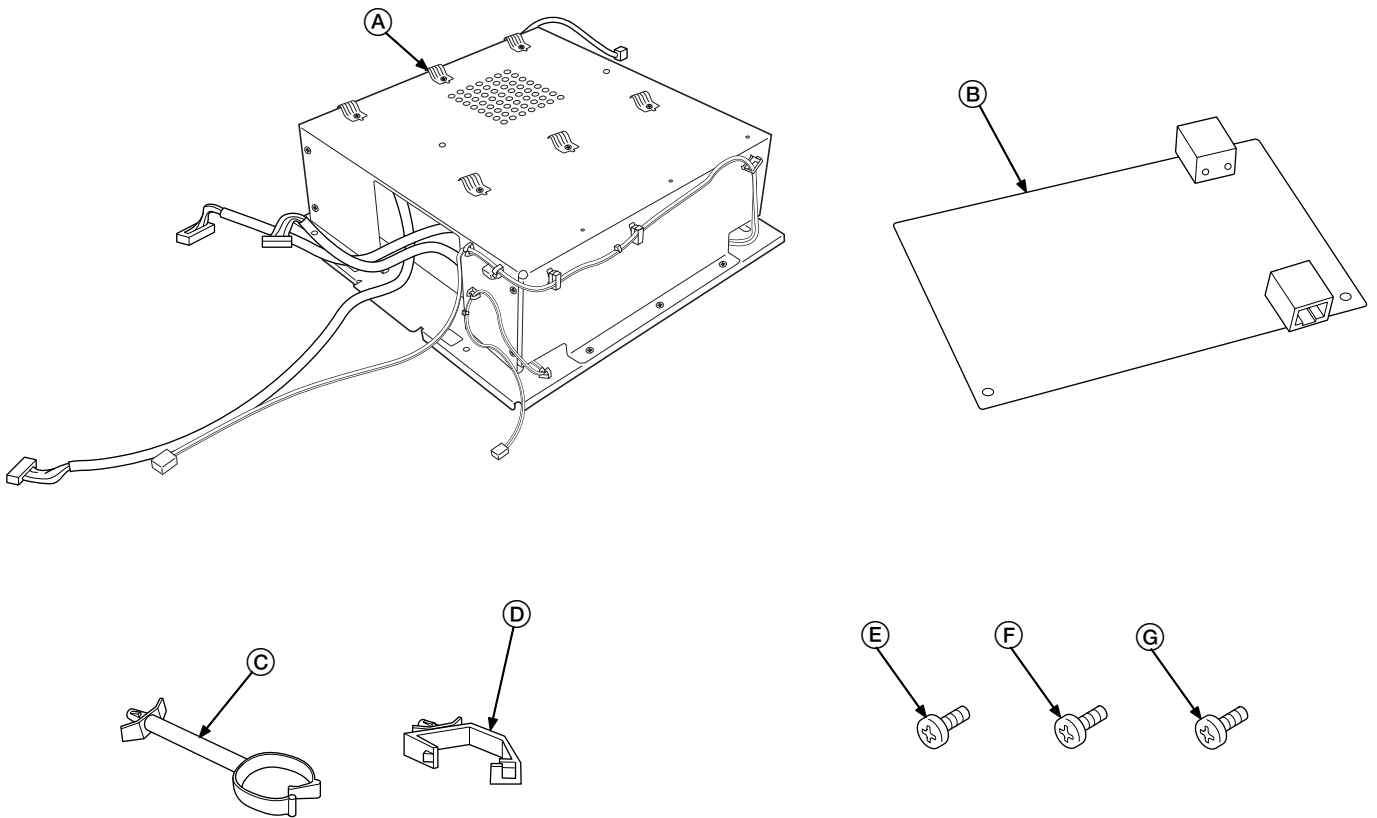


Scanner Plotter System (E) INSTALLATION GUIDE



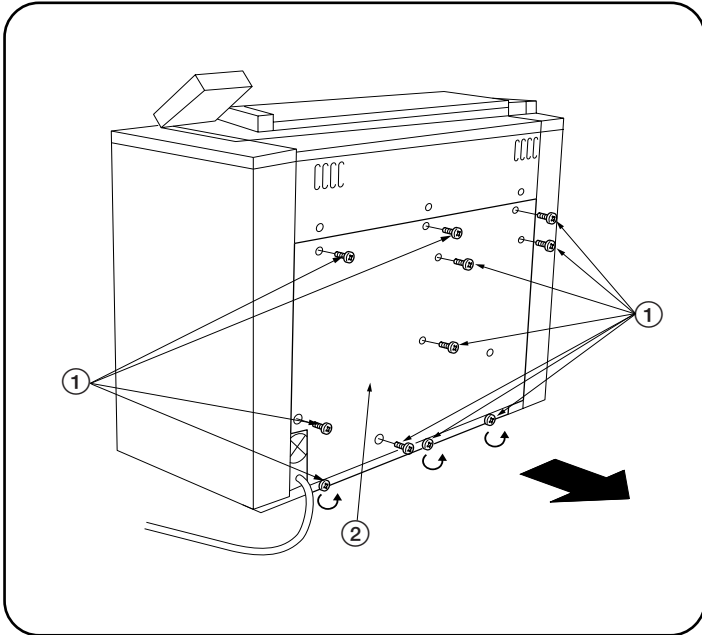


Package Contents

Ⓐ Controller Unit.....	1
Ⓑ Network Board	1
Ⓒ HL-38 Wire Saddle	3
Ⓓ LWS-3S-2W Locking Wire Saddle	2
Ⓔ M4X6 Binding Screws	4
Ⓕ M3X5 Binding Screws	2
Ⓖ M4X6 Raised Binding Screws	1

Important:

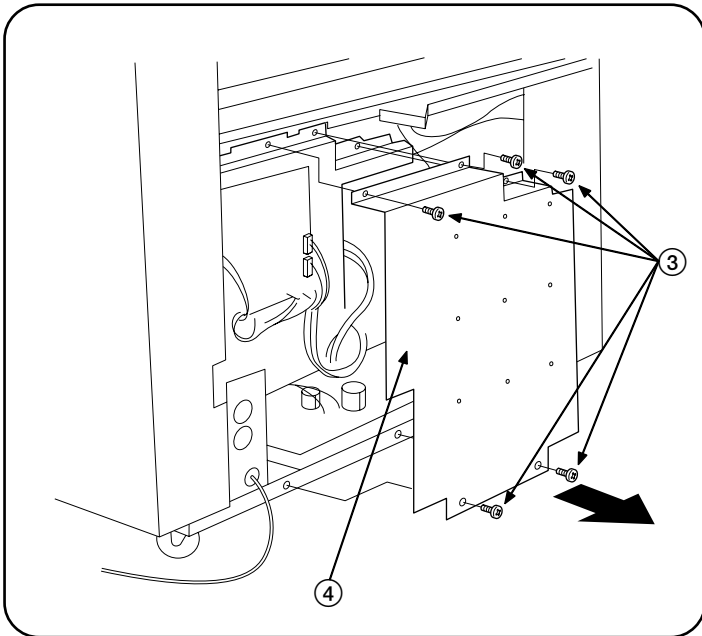
When disconnecting the power plug from the main body after installation, turn off the main switch of the main body and wait several seconds (more than five seconds) before disconnecting the plug. Do not disconnect the plug immediately.



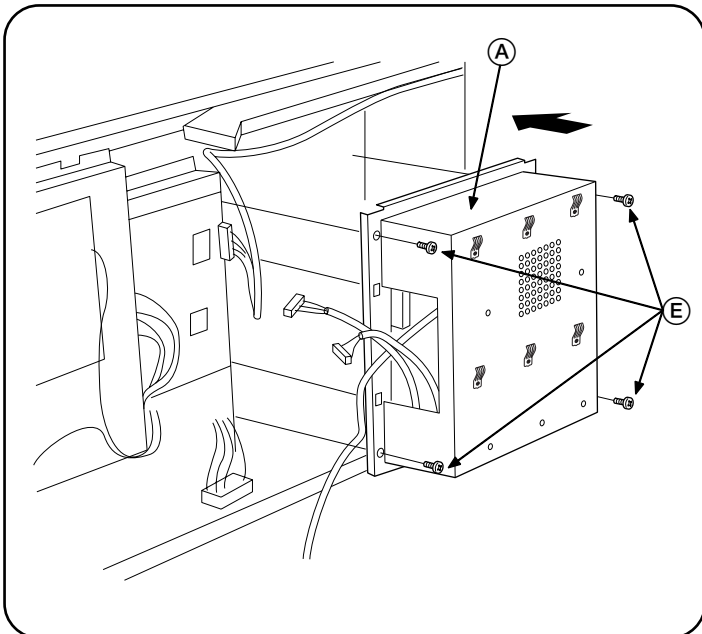
■Installation Procedure

* Turn the main unit main switch to OFF and unplug the main unit from the power supply before starting this procedure.

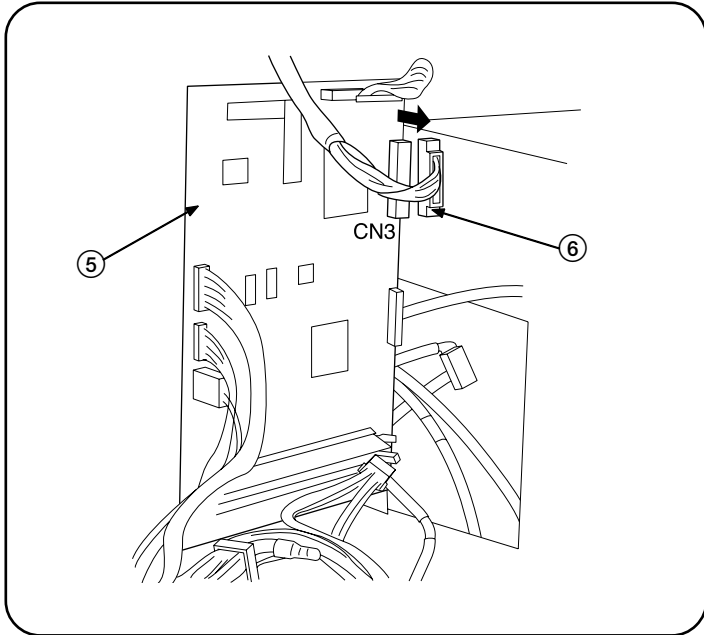
1. Remove 8 screws ①, loosen the 3 screws at the bottom ①, and remove the rear cover ②.



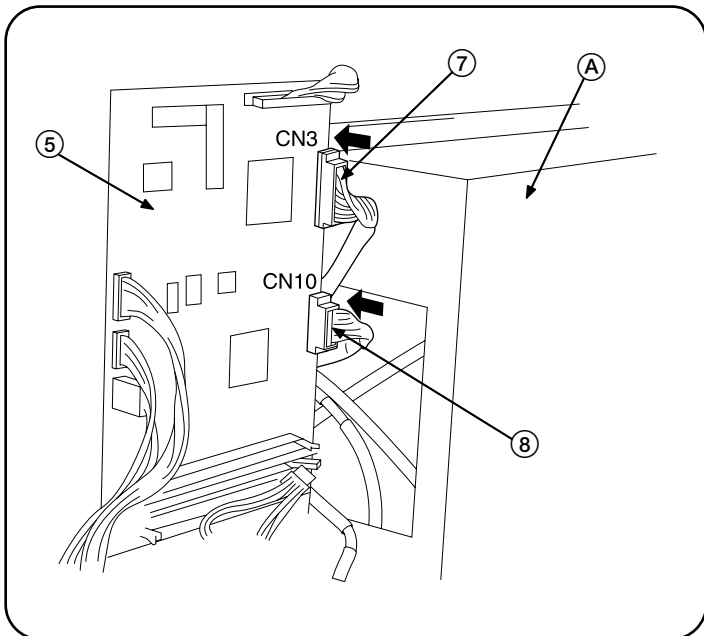
2. Remove 5 screws ③, and remove the main-PCB cover ④.



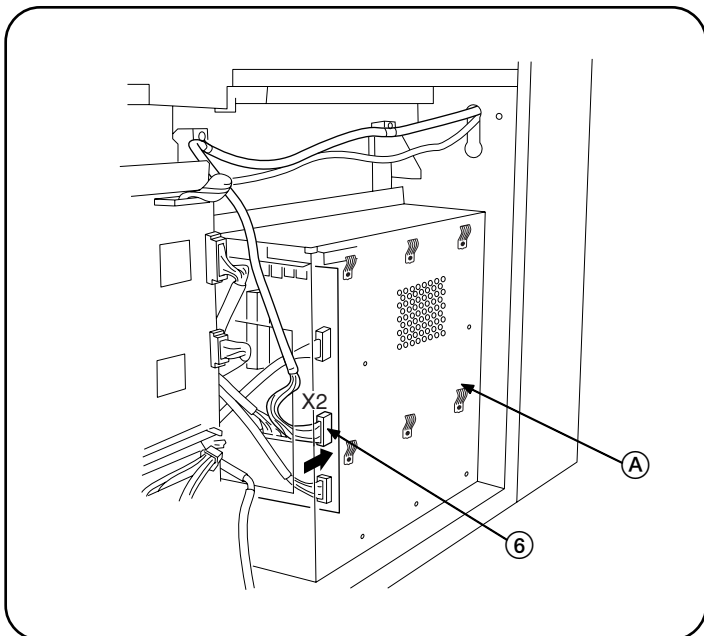
3. Fit the controller unit ⑤ onto the 4 hooks on the main unit, and fasten it into place with four M4X6 binding screws ⑥.



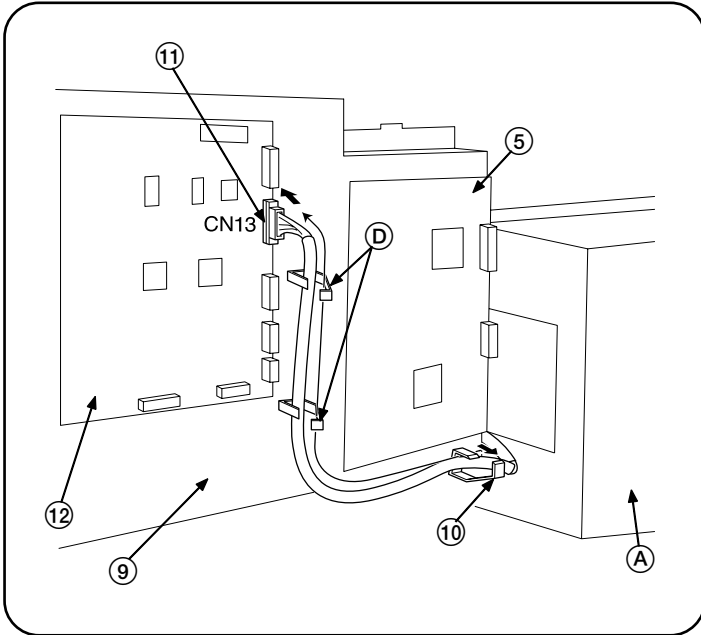
4. Detach the connector ⑥ from CN3 on the IPU board ⑤.



5. Connect the 32-pin connector ⑧ (black tubing) extending from the controller unit ① to CN10 on the IPU board. Connect the 52-pin connector ⑨ (white tubing) extending from the controller unit ① to CN3 on the IPU board ⑤.



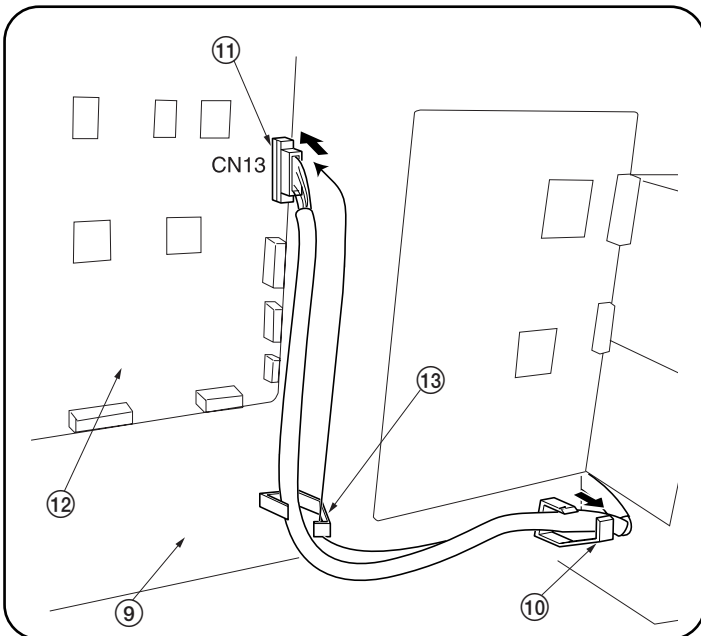
6. Connect connector ⑥ (the connector you detached at step 4 above) to X2 (Printer) on the controller unit ①.



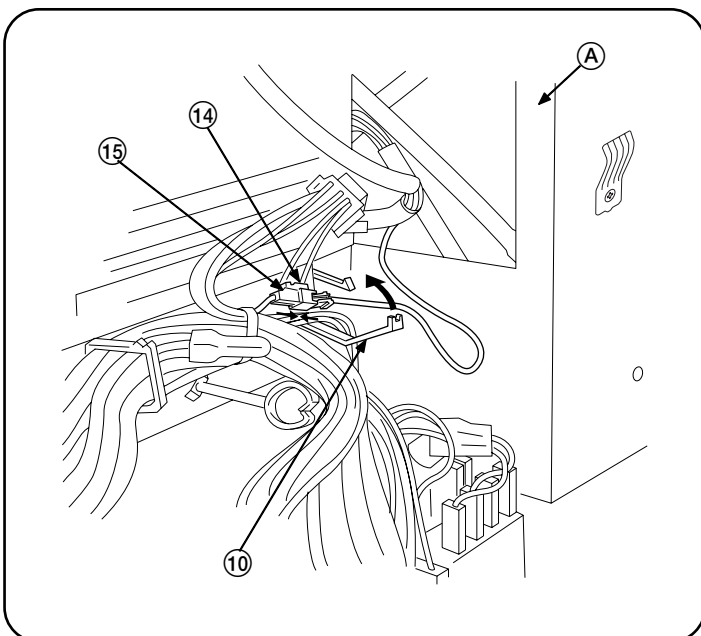
7. Attach the two LWS-3S-2W locking wire saddles (D) to the main-PCB retainer (9).

8. Unlock the wire saddle (10) that is under the IPU board (5), and run the (white tube) 32-pin connector (11) coming from the controller unit (A) through the three saddles.

9. Connect the (white tube) 32-pin connector (11) to CN13 on the main PCB (12).

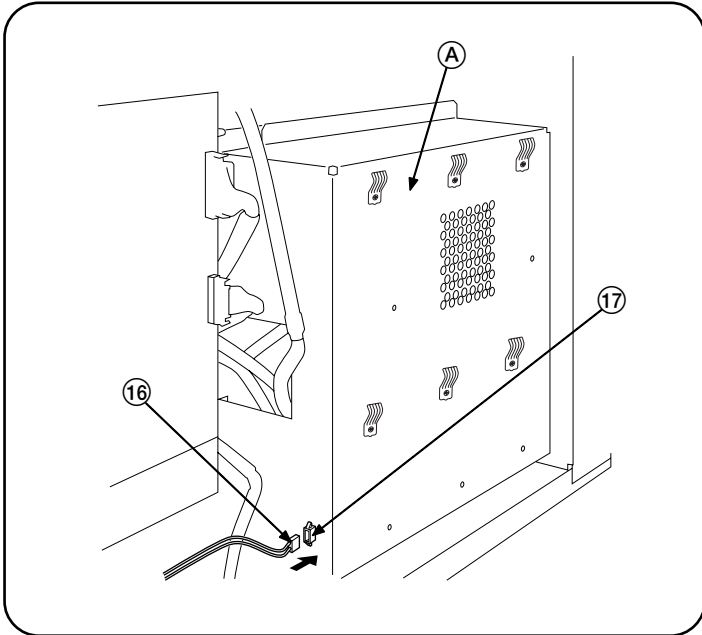


If the main body does not provide any holes for the LWS-3S-2W locking wire saddles (D) on the main-PCB retainer (9), carry out the following procedure instead of steps 7 and 8. Unlock the wire saddles (10) and (13) of the main body and run the (white tube) 32-pin connector coming from the controller unit (A) through the two wire saddles (10) and (13).

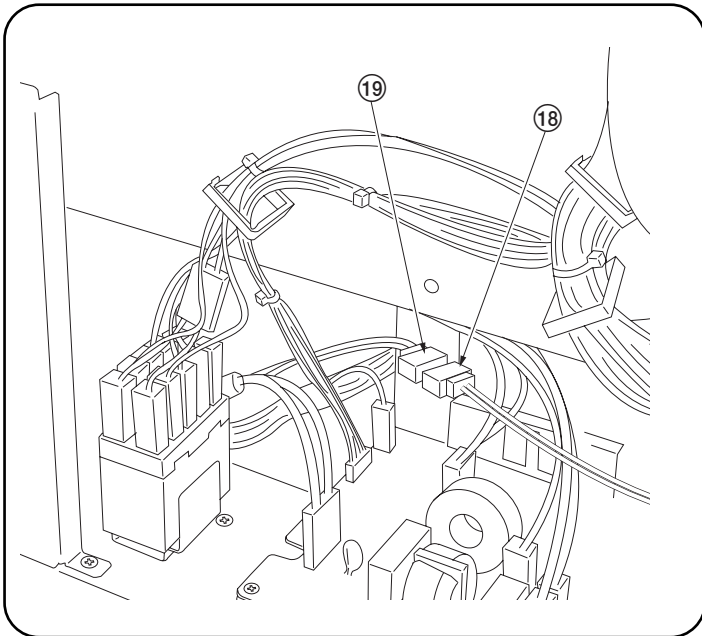


10. Pass the 2-pin power connector (yellow/purple) (14) extending from the controller unit (A) through wire saddle (10), and connect it to the (white) 2-pin main-power relay connector (15).

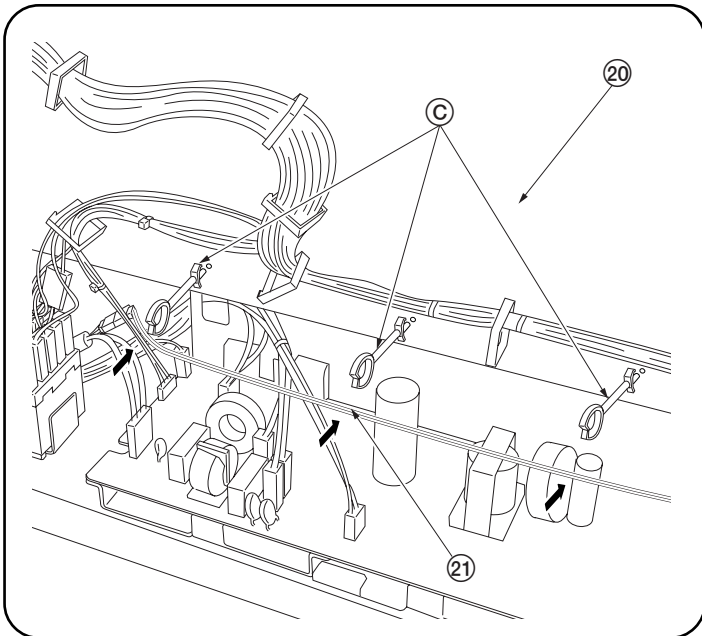
* After making the connection, lock the wire saddle (10).



11. Connect the (gray) 4-pin main-power relay connector ⑯ to the 4-pin connector ⑰ on the controller unit ①.

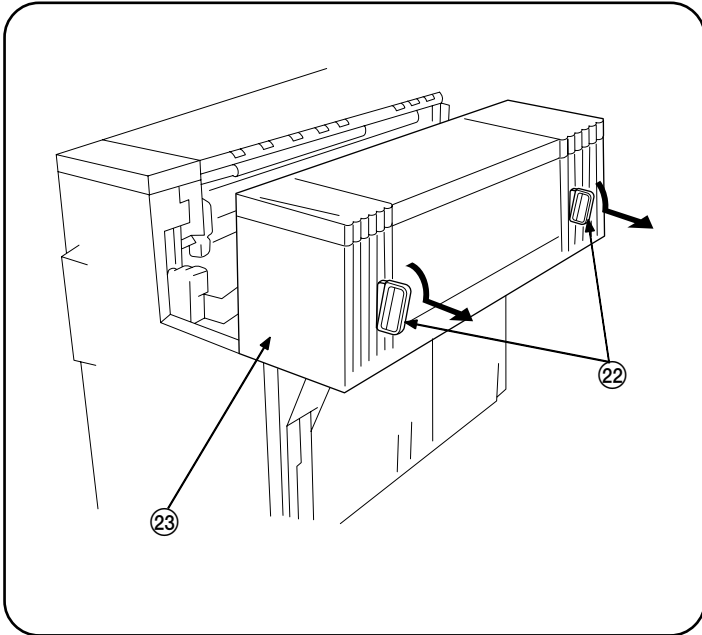


12. Connect the 2-pin connector (white/black) ⑱ for power supply of the controller unit ① to the wire primary relay connector ⑲.

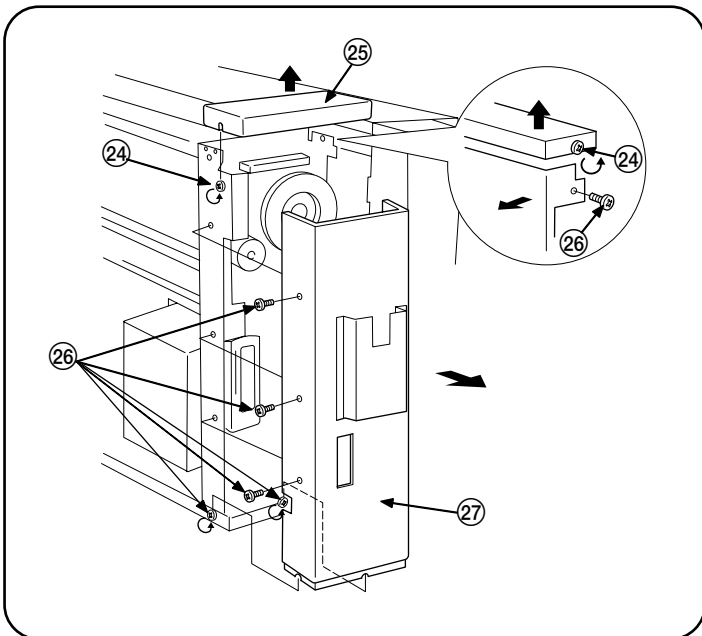


13. Attach the three HL-38 wire saddles ⑳ to the main-PCB retainer ㉑.

14. Fix the 2-pin wires ㉒ for power supply of the controller unit ① to the HL-38 wire saddles ㉓.

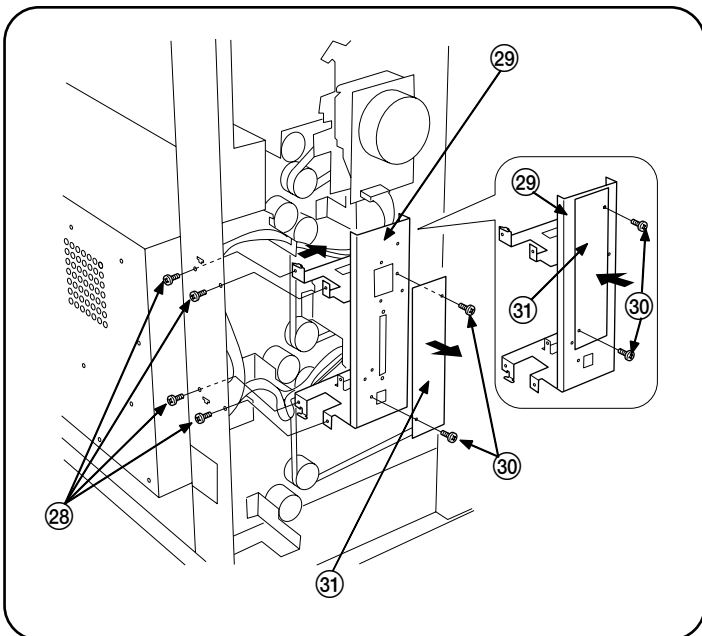


15. Lower the two levers ②② at the front of the main unit (pull them out and down), and pull out the attachment unit ②③.



16. Loosen 2 screws ②④ and remove the main unit's left rear upper cover ②⑤.

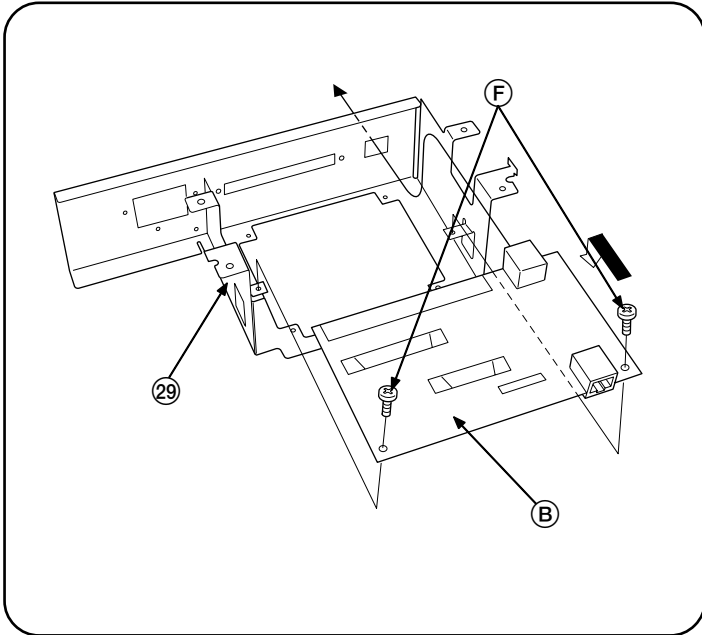
17. Remove 4 screws ②⑥, loosen 2 screws ②⑥, and remove the main unit's left rear lower cover ②⑦.



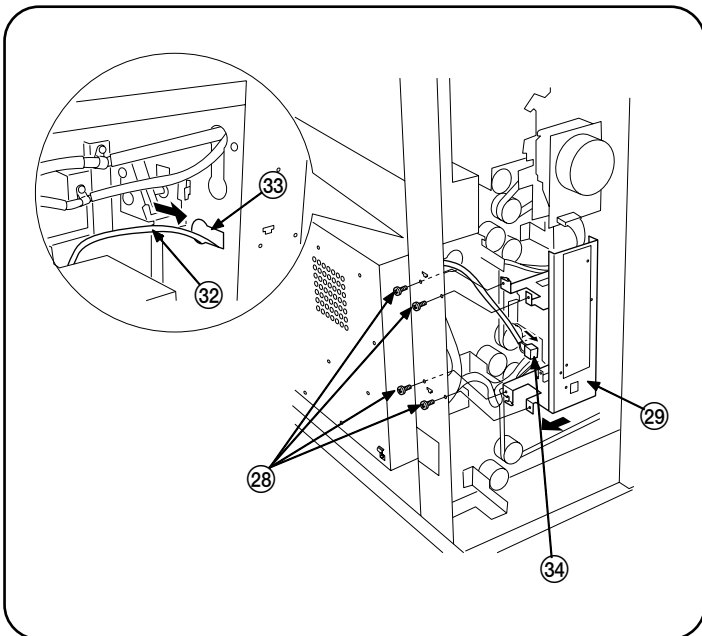
18. Remove 4 screws ②⑧, and remove the scanner interface retainer ②⑨.

19. Remove 2 screws ③⑩, and remove the cover ③⑪ from the scanner interface retainer ②⑨.

20. Using the same 2 screws ③⑩, reattach the cover ③⑪ to the scanner interface retainer ②⑨ at a different position, so that the modular inlet is visible.



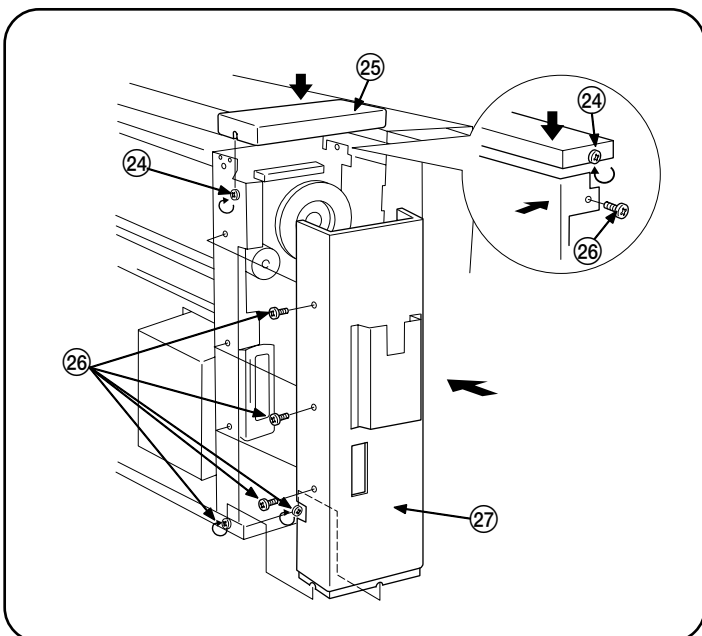
21. Attach the network board (B) to the scanner interface retainer (29) with two M3x5 binding screws (F).



22. Pass the modular cable (32) from the controller unit (A) through the connection hole (33) in the main unit.

23. Connect the modular connector (34) to the network board (B).

24. Attach the scanner interface retainer (29) to the main unit with 4 screws (28).

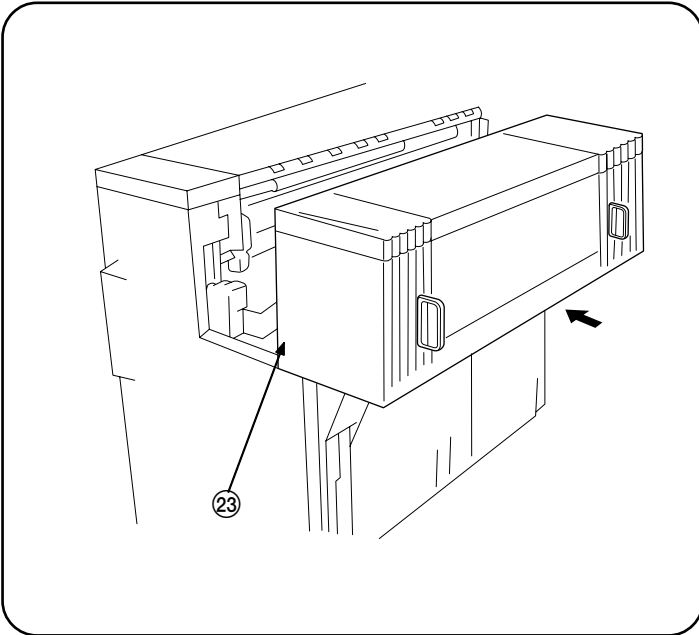


25. Reattach the main unit's left rear lower cover (27) with 6 screws (26).

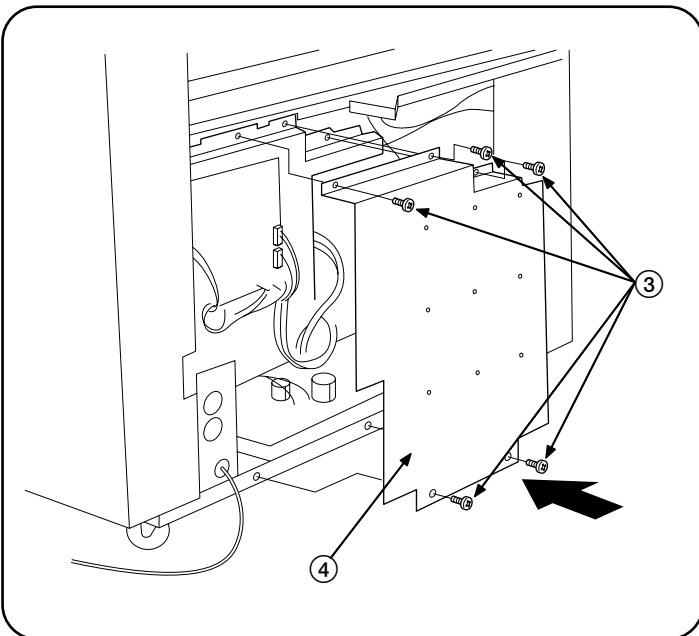
26. Reattach the main unit's left rear upper cover (25) by tightening its 2 screws (24).

* The main unit's left rear lower cover needs to be removed when the roll unit is installed at the same time.
The Procedures of 25 and 26 are not required when the roll unit is installed after NTL controller has been installed.

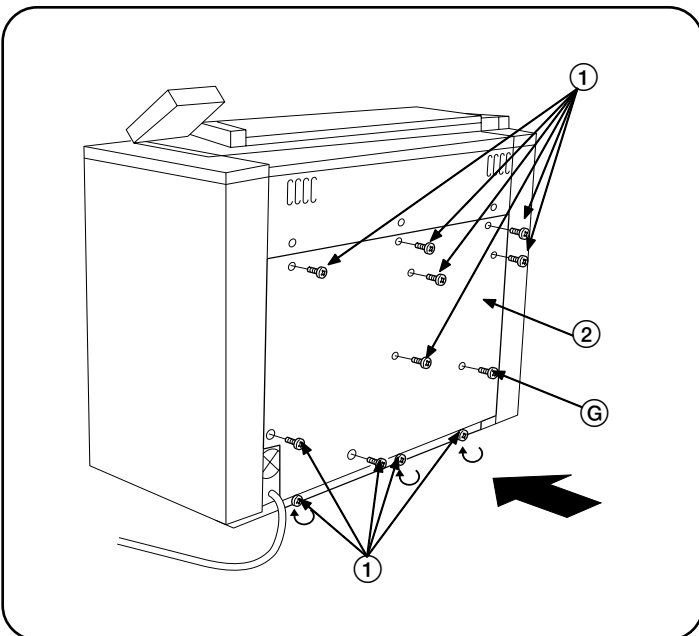
27. The attachment unit ⑳ is no longer needed. Store it in an appropriate place.



28. Reattach the main-PCB cover ④ with 5 screws ③.



29. Reattach the rear cover ②, using 1 M4X6 Raised Binding Screws ⑥ and the 11 screws ① that you removed or loosened at Step 1.



MEMO:

